



Messages from McDole

August 29, 2008

From Mrs. Eggleston:

Dear Parents,

Welcome back! I hope all of you had an enjoyable summer vacation.

Our first week went very smoothly. I would like to thank parents and staff for helping our students get off to a great start. Many students told me they were looking forward to school starting again. I think many parents said the same!

I am anticipating another successful year at McDole. We are looking forward to the implementation of Response to Intervention (RtI). RtI is a multi-step approach to providing services and intervention to students whose academic needs are not being met through the core curriculum. Seventeen of McDole's classroom teachers will be piloting RtI this year. By the year 2010, RtI will be fully implemented with all classrooms participating. I am proud of McDole's staff for their commitment to using their problem-solving resources to attain positive academic outcomes for McDole students.

Please take the time to familiarize yourself with the various activities taking place at McDole. Our calendar/handbook provides you with many dates as does our McDole website.

There has been a change in our birthday treat policy. Please make sure you take note of it. I have purchased birthday books for the children. In honor of their birthdays, students are encouraged to come to the office to pick out a book to donate back to their classroom. I provide a label that goes inside the book cover that says "This book has been donated to McDole Elementary School by _____". Students have the opportunity to give something to their classroom that their classmates can enjoy.

Enjoy the nice weather we are having. I look forward to seeing many of you as you come in and out of the building.

Sincerely,

Calendar of Events:

- Sept. 1 NO SCHOOL
- Sept. 2 Market Day Pick-Up
6 - 7:00 p.m.
- Sept. 3 Cub Scouts Round-Up
6:15-8:15 p.m.
- Sept. 5 Pre-School Screening
Faith Assembly/Elburn
- Sept. 8 Cub Scouts
7:00-9:00 p.m.
- Sept. 9 Fall Pictures
- Sept. 10 - 12 Larado Taft -
5th Grade
- Sept. 17 PTO Meeting
7:00 p.m.
- Sept. 18 Cub Scouts
6:30-9:00 p.m.
- Sept. 19 Progress Reports
PTO Kick-Off Fundraiser
2:30 Grades K - 2
2:55 Grades 3 - 5
- Sept. 23 Fun Lunch
Boundary Meeting
7:00 p.m.
- Sept. 30 Market Day Pick-Up
6 - 7:00 p.m.

PUBLIC HEARING TO DISCUSS BOUNDARY CHANGES—SAVE THE DATE!

Kaneland CUSD #302 will be conducting public hearings to provide information and to seek input from parents and community members regarding the boundary changes effective for the 2009-2010 school year. Both middle school and elementary school boundaries will be topics of discussion. The hearings will be held at 7:00 p.m. in the multi-purpose room of the schools indicated below:

McDole Elementary School, Montgomery — September 23, 2008

John Shields Elementary School, Sugar Grove — September 24, 2008

John Stewart Elementary School, Elburn — September 30, 2008

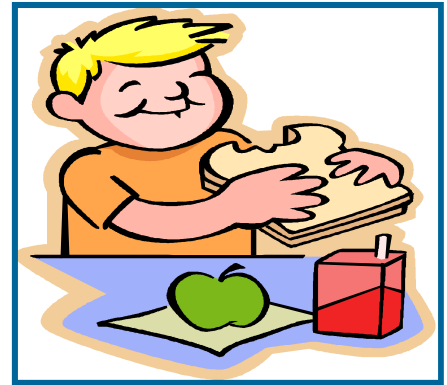
Blackberry Creek Elementary School, Elburn — October 7, 2008

More information will be forthcoming.



Health Snack Suggestions

- Raw vegetable sticks/slices with low fat dressing or yogurt dip.
- Fresh fruit wedges-cantaloupe, watermelon, pineapple, oranges, etc.
- Fruit salad
- Cereal with low fat milk
- 100% fruit or vegetable juice
- Dried fruit pops made with fruit juice
- Dried fruit-raisins, cranberries, apples, apricots, etc.
- Single serving applesauce or can fruit in juice
- Peanut butter with apple wedges or celery sticks
- Trail mix (dried fruit and nuts)
- Dry roasted nuts
- Lean meats
- Party mix, pretzels, or reduced fat crackers
- Baked chips with salsa or low fat dip
- Low fat muffins, granola bars, graham crackers, or fig bars
- Bagels with light or fat free cream cheese
- Pasta salad
- Bread sticks with marinara sauce
- Fat free or low fat yogurt, frozen yogurt, pudding cups, and fruit parfaits
- Fat free or low cheese cubes, string cheese, cottage cheese and milk



SNACK POLICY

The Kaneland Board of Education recently approved a revised Health and Wellness Policy 6.50. In order to promote healthy choices and support a culture of wellness in our schools, along with our concern for food allergies and childhood obesity, the district will adhere to the guidelines below. These guidelines do not apply to food and beverages that you send to school for your child's lunch and snack. However, we encourage you to support your school's efforts to provide children healthier food choices.

In order to implement the policy, the following guidelines will be followed:

- **Snacks** should comply with the healthy snack list provided by the district.
- **Holiday parties** will consist of one drink and one snack served within an hour time frame. No candy or food-treat bags will be distributed at school.
- **Birthdays** may be celebrated with non-food items. Birthday treats in the form of food items will not be allowed. If a food item is sent, they will not be served and will be sent home. Suggested birthday "treats" can include things like: a pencil, a book for the classroom, or stickers.

Classroom incentives will be in the form of non-food items and extra activities.

A quick look at...**CHARACTER COUNTS!**

CHARACTER COUNTS! Strengthens young lives through character education.. Studies repeatedly show that it cuts misbehavior and improves focus on school. It works. But it's not an add-on. It's a framework, employed by schools, communities, businesses and other organizations helping millions of youths develop the Six Pillars of Character.

Trustworthiness

Be honest • Don't deceive, cheat or steal • Be reliable — do what you say you'll do • Have the courage to do the right thing • Build a good reputation • Be loyal — stand by your family, friends and country

Respect

Treat others with respect; follow the Golden Rule • Be tolerant of differences • Use good manners, not bad language • Be considerate of the feelings of others • Don't threaten, hit or hurt anyone • Deal peacefully with anger, insults and disagreements

Responsibility

Do what you are supposed to do • Persevere: keep on trying! • Always do your best • Use self-control • Be self-disciplined • Think before you act — consider the consequences • Be accountable for your choices

Fairness

Play by the rules • Take turns and share • Be open-minded; listen to others • Don't take advantage of others • Don't blame others carelessly

Caring

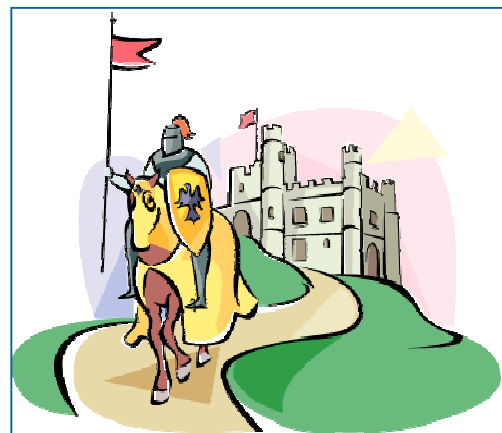
Be kind • Be compassionate and show you care • Express gratitude • Forgive others • Help people in need

Citizenship

Do your share to make your school and community better • Cooperate • Get involved in community affairs • Stay informed; vote • Be a good neighbor • Obey laws and rules • Respect authority • Protect the environment

Throughout the year, you will see and hear about activities and programs that your children will be involved in to help Character Count at McDole! One main program is the KNIGHT program. Children at McDole caught showing good character can be KNIGHT'd for their behavior. Is your child a KNIGHT?

Kind to Others
Not a bully
Includes everyone in Play
Gives Adults respect
Helps those in need
Tells the truth



Welcome to the Kingdom of Readers! Yes, McDole is being knighted into a “Kingdom of Readers” for the 2008-2009 school year. Kingdom of Readers is our new school wide reading initiative promoting reading. The students will participate in the Kingdom of Readers by erecting a classroom castle. Classroom castles will be placed on the bulletin boards throughout McDole. As the students of McDole read books, they will record the information onto a castle brick. Each classroom castle will be built brick by brick. Also, our school library will be using this theme throughout the school year.

Be on the look out for the castles coming to life throughout the halls of McDole. We look forward being a Kingdom of Readers through the magical world of books.

Paper Retriever

As we kick off the school year, I wanted to alert you to the fact that we have the Paper Retriever recycling program in place in our school lot. You may have noticed the large green & yellow container and hopefully are making use of it. This is a community driven recycling program that depends on households like yours to make it a success.

Please join your friends and neighbors in supporting our recycling program. It is a wonderful way to assist the school without having to get out your checkbooks. Simply bring your recyclable paper by the school when you drop off the kids, or on your way to the store, or as you drive by on an errand. Place your recyclable paper in the green & yellow Paper Retriever bin in our lot.

Items that can be recycled include: newspapers, magazines, catalogs, junk mail and paper.

Please no cardboard, phonebooks, cereal boxes, or food cartons

Thank-you for supporting McDole.

NEW PET POLICY

At the August 25, 2008 Board of Education meeting, the Board approved a new pet policy for Kaneland campuses. The purpose of the policy is to ensure the safety of all Kaneland students, as well as staff and visitors to the schools. The policy reads as follows:

"It will be a violation of Board policy to possess an animal in a Kaneland campus during school hours or activities, including drop-off or pick-up of students before and after school. School hours are defined as being from 15 minutes prior to the beginning of school in the morning and 15 minutes after the end of school. School activities often take place outside of these hours. Exceptions to this would be an animal that is acting as a service animal; present for an approved educational purpose; or, transiting a public bike path/walkway.

New Message Service

Beginning this school year, Kaneland is implementing a new messaging service throughout the District. This new service is called Connect-ED and will enable us to personally communicate with parents about emergency situations, school events and important issues impacting your child. It will allow us to send personalized voice messages to your family's home, work or cell phones, e-mail communications, and even text messages. We will be able to reach everyone in the district within minutes.

This system will not be replacing our KCN e-newsletter.

With his new system, it is extremely important that all of your contact information is updated regularly. Please contact the office if you have any changes.

We look forward to sending a text message in the near future. More information will be forthcoming!

McDole Satisfaction Survey Results

Thank you to the families who completed the satisfaction survey last spring. We are pleased with the overall results and look forward to making positive improvements. Here are the results. . .

	Yes	No	Other
1. I am comfortable speaking to the principal.	92%	3%	5%
2. I am comfortable speaking with the teachers.	97%	3%	0%
3. My child knows their teacher wants them to succeed.	97%	2%	1%
4. McDole has effective and high quality classrooms.	98%	1%	1%
5. McDole has a good public image.	91%	7%	2%
6. I feel welcomed when I am at McDole.	94%	5%	1%
7. Teachers hold high academic expectations for all students.	96%	3%	1%
8. I am greeted by the front office staff in a friendly manner.	96%	2%	2%
9. The office staff is helpful to me.	97%	1%	2%
10. I am satisfied with the amount of school communication.	90%	8%	2%
11. The principal listens to my concerns.	85%	3%	12%
12. Disciplinary problems and student misbehavior are handled effectively.	81%	8%	11%
13. The homework my child is assigned is reasonable.	91%	7%	2%
14. My child's homework assignments are meaningful.	94%	4%	2%
15. Concerns about my child's progress are quickly communicated to me.	90%	7%	3%